

MISSION HILLS TOWNHOUSE

4020Eagle.com



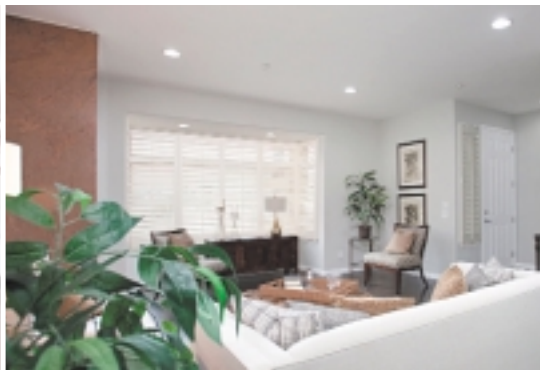


Located in the coveted San Diego neighborhood of Mission Hills, 4020 Eagle Street is a rare find!

Mission Hills is a centrally located, historical neighborhood that is full of beauty and charm. Shopping, dining and entertainment opportunities within Mission Hills are just steps from this home. Additionally the surrounding neighborhoods of Hillcrest, Little Italy and downtown San Diego are moments away as is the World famous Balboa Park, the San Diego Zoo, the San Diego Bay and the San Diego International Airport.

Freeway-close, the San Diego beaches, Mission Bay, Coronado Island and La Jolla are all minutes away.



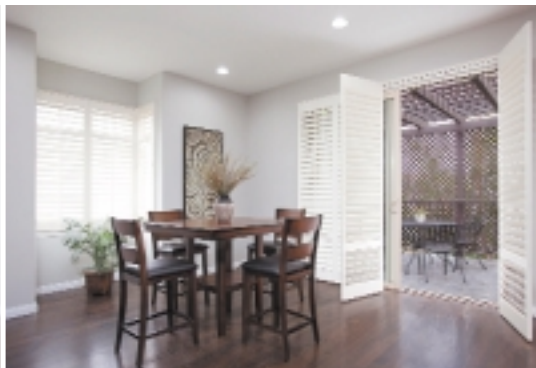


A modern vision of the classic townhouse - and almost 2,600 SF!

This spacious three level home has 4 bedrooms, 3.5 baths, a 2-car garage and a dedicated laundry room. The main/2nd level has an

open floor plan with soaring ceilings, a gracious entry, wood floors a gas fireplace with a stunning granite surround, large bay windows, a modestly placed powder room and a partially enclosed balcony with a pergola.



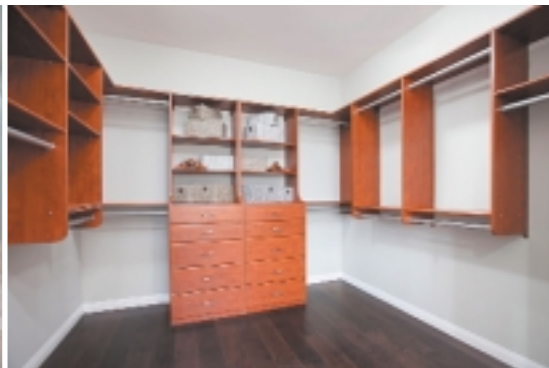
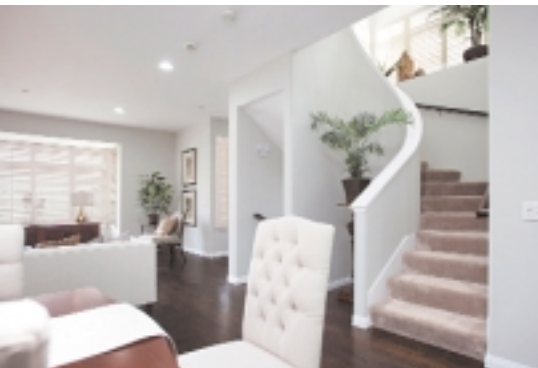


The very large chef's kitchen is an entertainer's dream!

The kitchen has granite counters including an island with a second sink and a generous pantry. The appliances are stainless, the range

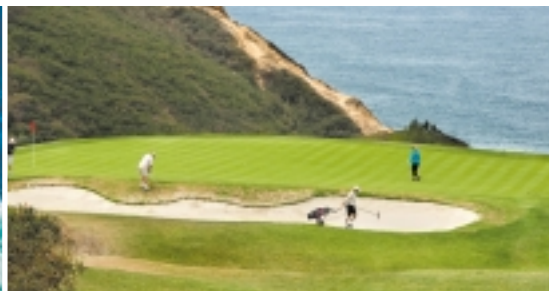
and oven are gas. The adjoining space could be used for more informal dining or as an intimate family room. The balcony off the kitchen is a generous size with a staircase to the lower level. It's perfect dining and entertaining al fresco!

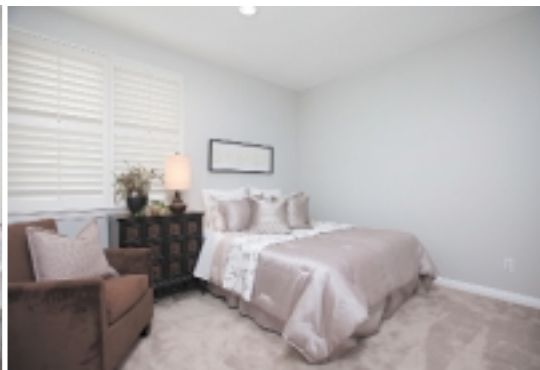
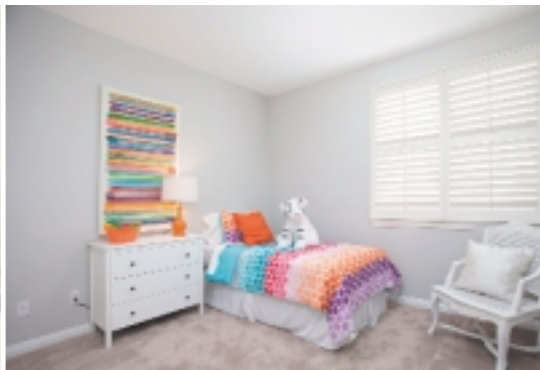




Up the sweeping staircase, with a huge bay window, a generous top landing and hall invite you to the the upper/3rd level. The master suite, 2 bedrooms (*photos on pg. 6*), a full bath with a double vanity and the laundry room (*photos on pg. 7*) are all located on this level.

The master suite includes a large walk-in closet with beautiful built in shelving and drawers. The large marble tiled master bath is like a private spa. It includes a large spa tub, step-in shower, double vanity, generous storage, and a discreet water closet.

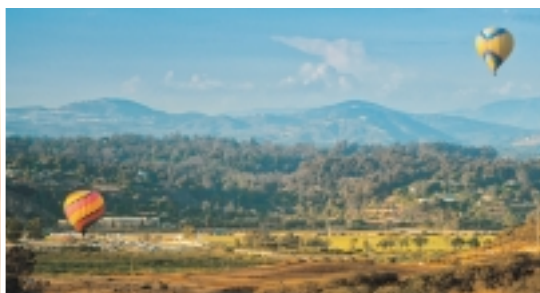


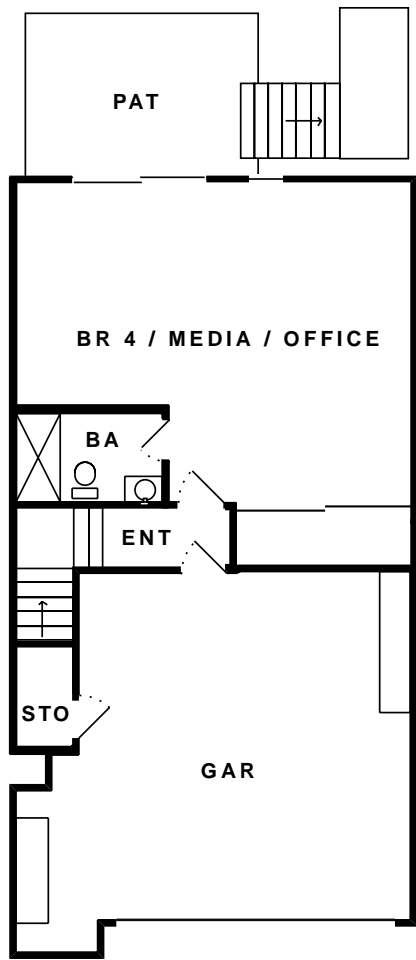


On the lower/street level of the home is a very spacious suite with a full bath, generous closet, bamboo floors and sliding doors that lead to a private patio. Off the patio is a staircase to the balcony off the kitchen on the main level of the home. This space could be

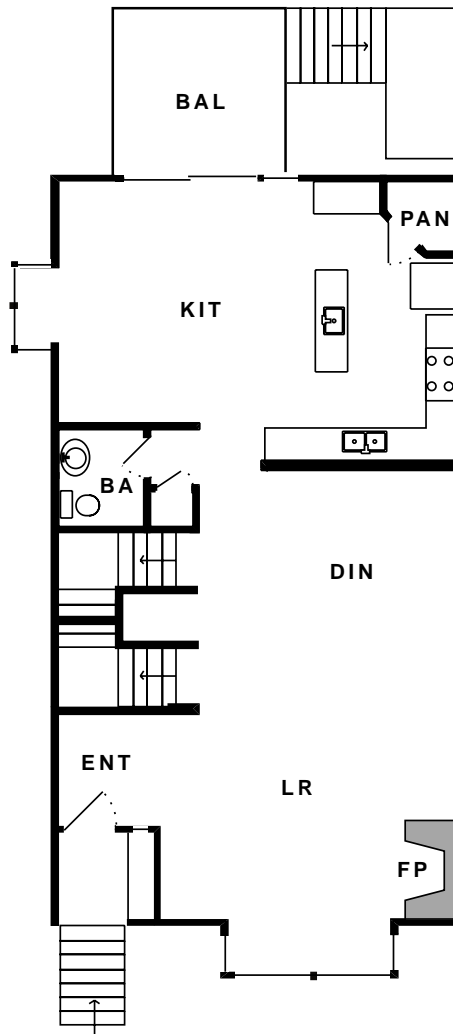
used as a guest suite, office or media room - so many possibilities!

The 2-car garage (*photo on pg. 7*) has plenty of storage and the floor was recently resurfaced with an epoxy finish - it's like new!

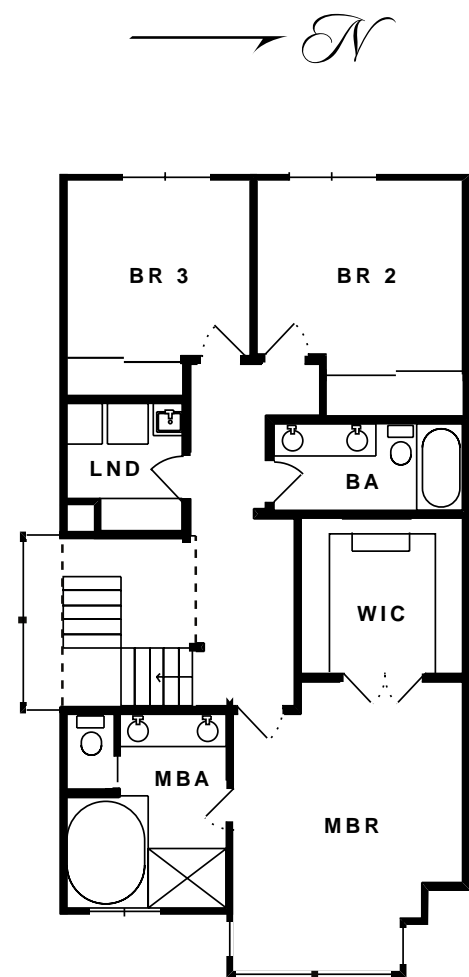




Lower Level



Main Level



Upper Level



ADDITIONAL INFORMATION

City: San Diego LD: 5/31/2018 Status: Active
 MLS#: 180029051 SF: 2,568 Map Code: 1267 J5
 Cross Street: Washington Directions: Washington to Eagle

GENERAL INFORMATION

APN: 444-413-12-08 Topography: Level Year Built: 2003
 Floors: Wood/Tile/Carpet Heat: Gas Cooling: Forced
 Roof: Composite Water: Meter on Prop Exterior: Mixed
 Sewer: Connected Source of SF: Assessor Record

ROOMS INFORMATION

LR/DIN: 31 x 23 KIT: 25 x 16 MBR: 17 x 13
 BR 2: 12 x 11 BR 3: 11 x 10 BR 4: 22 x 17
 GAR: 23 x 22

Contact Agent: Jim Greer

CA BRE Lic. 01240616

(619) 985-1628

Jim@JimGreer.com

2nd Agent: Tobi Gary (619) 248-1387

CA BRE Lic. 01907086



CA BRE LIC. 01501132

Prepared by: Jim Greer. Information is believed to be reliable, but not guaranteed.